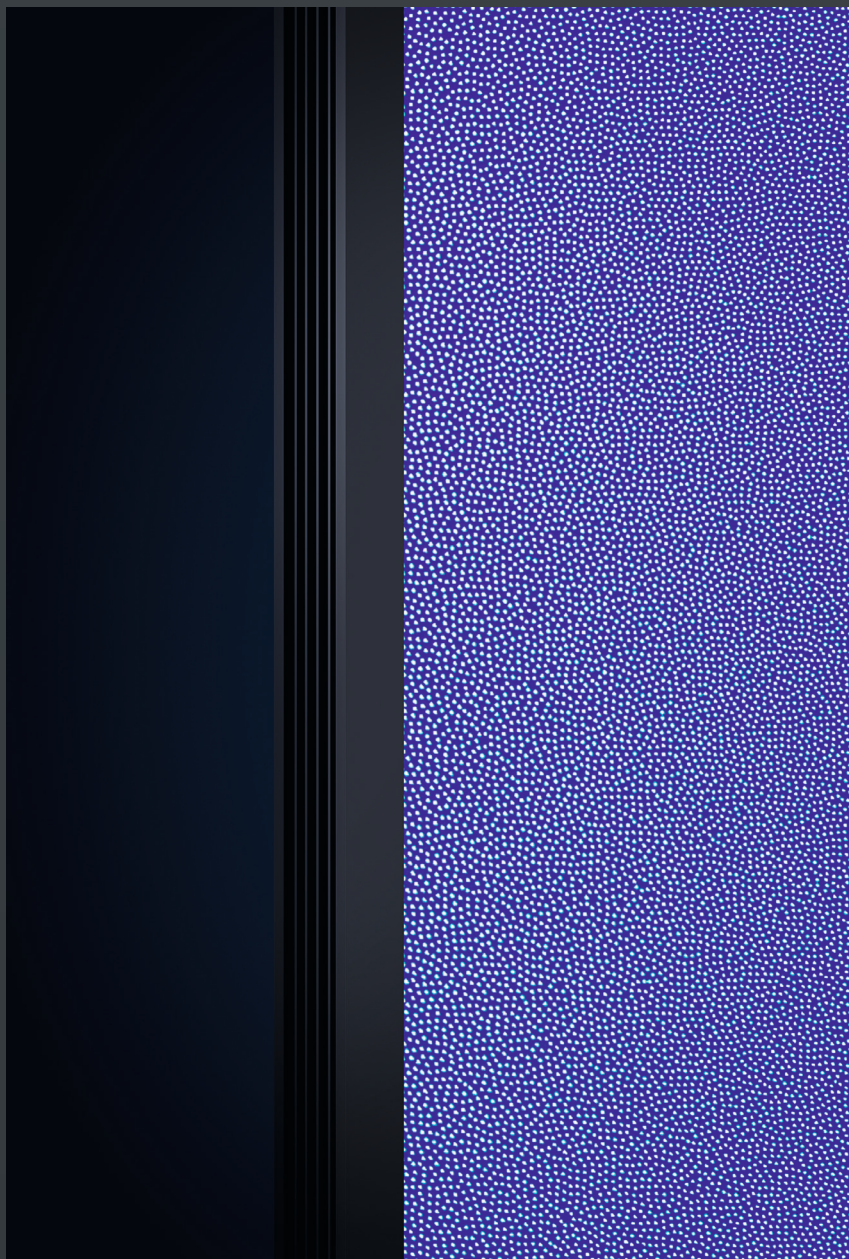


CUSTOMIZED ILLUMINATION
for SUPERYACHTS

YACHTIMA 

R G B w - s - H P

RGB_w-s-HP



HIGH POWER MODULE TO ILLUMINATE LARGE GLASS PANELS

Features

- Simple assembly: Aligning modules on glass; clamp clamping profile with screws on glass panels
- For installations with heat conduction
- High power modules especially designed for irradiating into large glass panels
- DMX or DALI control possible
- Simple colour change
- Dimmable
- Control of LED groups (150 mm)

Efficiency

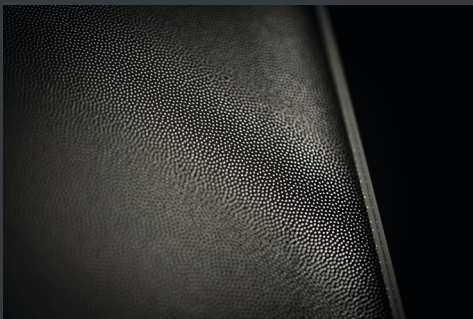
Increased efficiency of luminous flux > 50 % compared to commercially available LED-stripes for irradiating into glass panels.

Applications

- Installation possible on various thick glass panels
- Suitable for indoor and outdoor applications

Patterns for glass panels

- Lines
- Small dots
- Big dots
- Customized patterns



Technical data

Colour

- red (625nm)
- green (528nm)
- blue (460nm)
- white (6500K – daylight)

Power supply

48V

Electr. power

- 68 W / 150 mm
- 204 W / 450 mm
- 450 W / 1000 mm

Luminous flux

- 150 mm: min 2440 lm · max 4830 lm
- 450 mm: min 7300 lm · max 14480 lm
- 1000 mm: min 16224 lm · max 32180 lm

Appliance classes

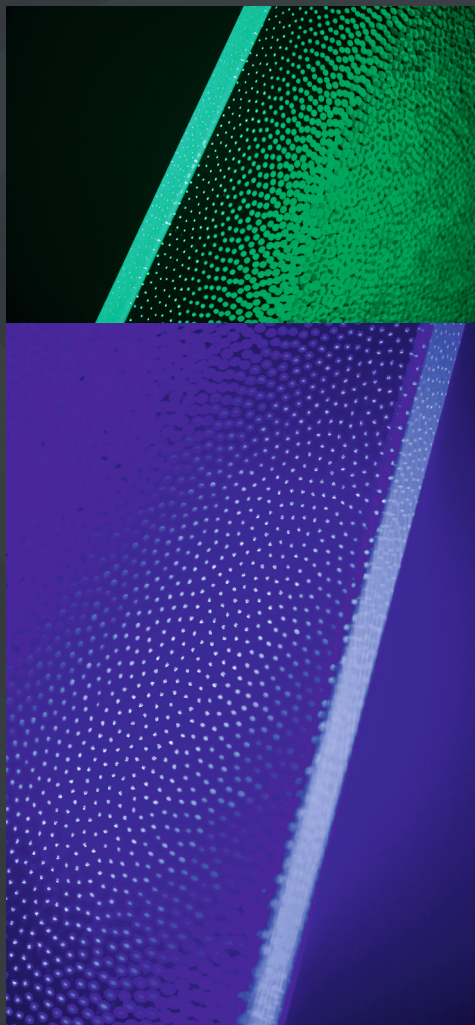
III

IP code

IPx5 (IP x6 / x7)

Dimensions

- 450 mm × 41.5 mm × 56.5 mm
- 150 mm × 41.5 mm × 56.5 mm



Available in spring 2016

For further information please contact us

Sales Manager: Andreas Grey T +49 / 172 / 8 36 49 57 andreas.grey@yachtima.com

YACHTIMA brand of RUETZ TECHNOLOGIES GmbH Walter-Gropius-Strasse 17 D-80807 München Germany
T +49 / 89 / 3 56 10-175 F +49 / 89 / 3 56 10-111 CEO: Stefan Ruetz Registergericht München HRB 87510
info@yachtima.com www.yachtima.com